

NOTE: DIMENSIONS IN [ ] ARE ENGLISH STANDARD EQUIVALENTS.

REV	DATE	CHANGE NUMBER	ON COMPOSITE DWGS, SEE PART NO. FOR REVISION LEVEL □ INDICATES PART NUMBERS AFFECTED BY LATEST DRAWING REVISION	BY
A	23JUL2021	CT213532	(B-2) FUEL INLET 1 & 2 ADDED	RVM
B	29SEP2022	CT221726	SEE SHEET 2	AAS
C	02NOV2022	CT223403	(B-2) "FUEL INLET 1 1" NPT" REMOVED; "FUEL INLET 1" NPT" WAS "FUEL INLET 2 1" NPT"; (B-7) "OPTIONAL RIGHT SIDE FUEL INLET 1" NPT" NOTE ADDED;(B-6) DIM. 1182 & 54 ADDED; (D-3, A-7) OPTIONAL E-STOP KIT LOCATION & NOTE ADDED: SEE SHEET 2	NCD

UNLESS OTHERWISE SPECIFIED:  
ALL DIMENSIONS IN MILLIMETERS  
GENERAL TOLERANCES:  
X.XX ± 0.25  
X.X ± 1.0  
X ± 1.5  
ANGLES ± 0°30'

SURFACE FINISH  
MAX.

THIRD ANGLE PROJECTION

MAJOR ○ = 0  
CRITICAL ⊗ = 0  
CHARACTERISTICS COMPLY WITH  
KPS-50022

DRAWN BY RVM  
APPROVED BY TAS

DATE: 22JAN2021

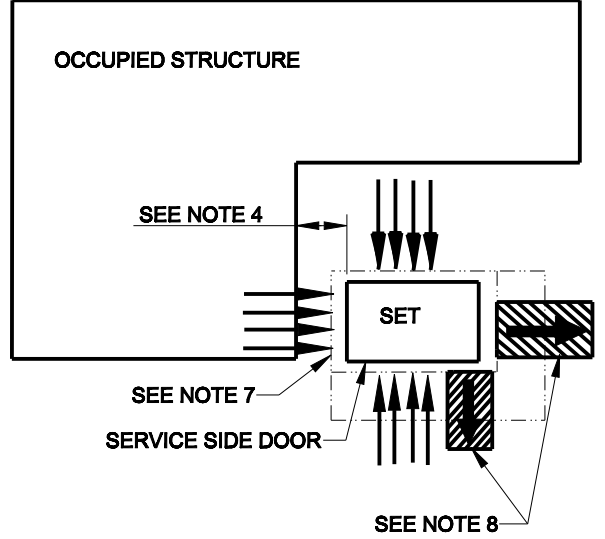
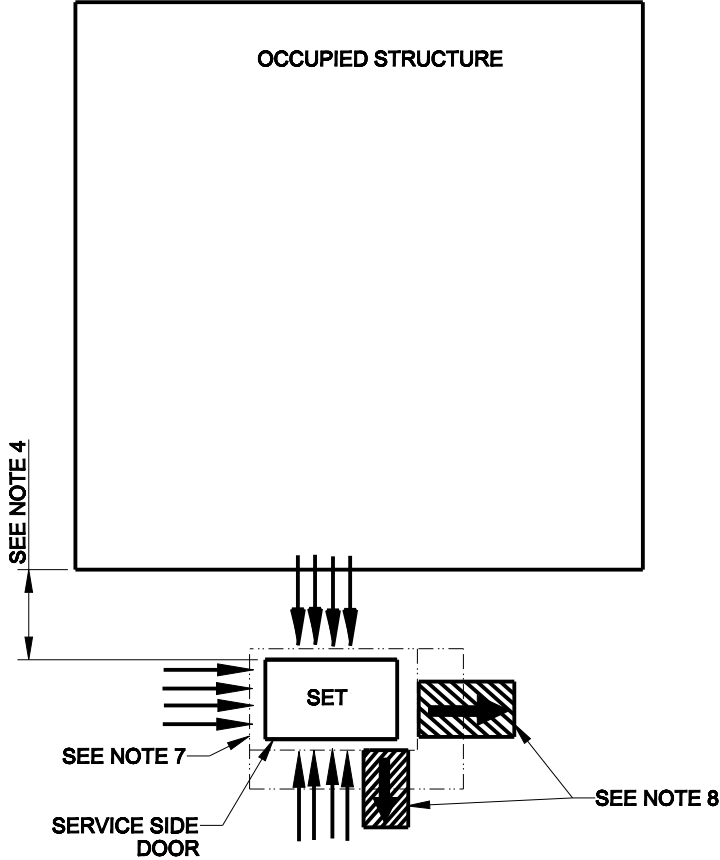
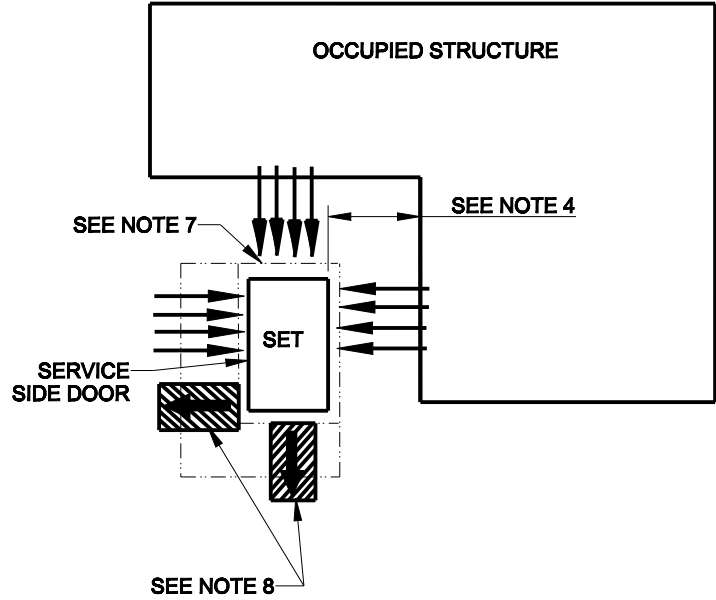
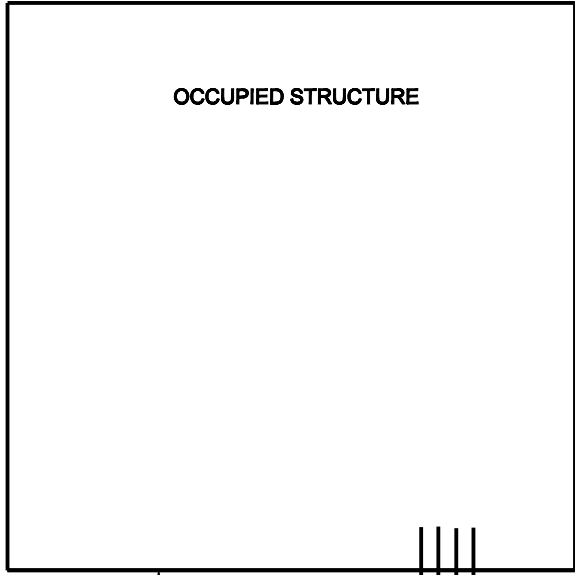
DO NOT SCALE.  
THIS ASSEMBLY OR PART MUST  
COMPLY WITH PEP-RML-001.  
REFERENCE CAD MODEL FOR  
UNSPECIFIED DIMENSIONS.

**KOHLER.**  
KOHLER, WISCONSIN 53044

SCALE: 0.060    SHEET SIZE: B    SHEET 1 OF 2

TITLE:  
**DIMENSION PRINT, 24RCLA**


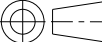
DWG NO.: **ADV-9758**



INSTALLATION GUIDELINES

- 1) EXHAUST IS AIMED AWAY FROM OR PARALLEL TO THE STRUCTURE.
- 2) EXHAUST IS NOT DIRECTED AT PLAY AREAS, PATIOS OR OTHER AREAS WHERE PEOPLE CONGREGATE.
- 3) THE NEAREST WINDOW, VENT, DOOR OR SIMILAR STRUCTURE OPENING IS AT LEAST 5 FEET FROM THE EXHAUST END OF THE GENERATOR.
- 4) GENERATOR SET MUST BE INSTALLED A MINIMUM OF 18 INCHES FROM STRUCTURE PER NFPA 37, HOWEVER, ACTUAL DISTANCE MAY DIFFER BASED ON STATE AND LOCAL CODES.
- 5) WINDOWS & DOORS ON ADJACENT WALLS ARE CLOSED.
- 6) FURNACE AND OTHER SIMILAR INTAKES ARE AT LEAST 10 FEET FROM EXHAUST END OF GENERATOR.
- 7) 4" THICK CONCRETE PAD EXTENDING 6" BEYOND GENSET ON ALL SIDES.
- 8) NO PLANTS, SHRUBS OR OTHER COMBUSTIBLES ALLOWED IN CLEARANCE AREA. (MINIMUM 4 FT. FROM EXHAUST END).
- 9) SENSITIVE PLANTS, PATIO FURNITURE, ETC. ARE AT LEAST 8 FEET FROM EXHAUST END OF SET.
- 10) REFER TO OWNERS MANUAL FOR OTHER INSTALLATION CONSTRAINTS.
- 11) RECOMMENDED SKID ANCHOR - 1/2" HILTI KWIK BOLT TZ CARBON STEEL WEDGE ANCHOR WITH STANDARD WASHER.

REV	DATE	CHANGE NUMBER	ON COMPOSITE DWGS, SEE PART NO. FOR REVISION LEVEL □ INDICATES PART NUMBERS AFFECTED BY LATEST DRAWING REVISION	BY
-	22JAN2021	CT209473	NEW DRAWING	RVM
A	23JUL2021	CT213532	SEE SHEET 1	RVM
B	29SEP2022	CT221726	(A-7) NOTE 8: 4FT WAS 8FT	AAS
C	02NOV2022	CT223403	(A-8) NOTE 11 ADDED; SEE SHEET 1	NCD

UNLESS OTHERWISE SPECIFIED: ALL DIMENSIONS IN MILLIMETERS GENERAL TOLERANCES: X.XX ± 0.25 X.X ± 1.0 X ± 1.5 ANGLES ± 0°30'		SURFACE FINISH  MAX.	
THIRD ANGLE PROJECTION 			
MAJOR ○ =		0	
CRITICAL ⊗ =		0	
CHARACTERISTICS COMPLY WITH KPS-50022			
DRAWN BY	RVM	DATE:	
APPROVED BY	TAS	22JAN2021	

DO NOT SCALE. THIS ASSEMBLY OR PART MUST COMPLY WITH PEP-RML-001. REFERENCE CAD MODEL FOR UNSPECIFIED DIMENSIONS.		
<b>KOHLER.</b> KOHLER, WISCONSIN 53044		
SCALE: 0.060	SHEET SIZE: B	SHEET 2 OF 2
TITLE: <b>DIMENSION PRINT, 24RCLA</b>		
DWG NO.: <b>ADV-9758</b>		